

One to try - solution

Taken from a yacht's log.

Take variation as 6W and use the Deviation Table in the Almanac

Time	Log	Co	Wind	L'way	Narrative
1500	27.7	265C	NE3	-	South Head Lt bears 342M
1530	31.2	265C	NE3/4	-	South Head Lt now bears 068M

(Tidal stream 1500 -1530 is 125T / 1.2 knots)

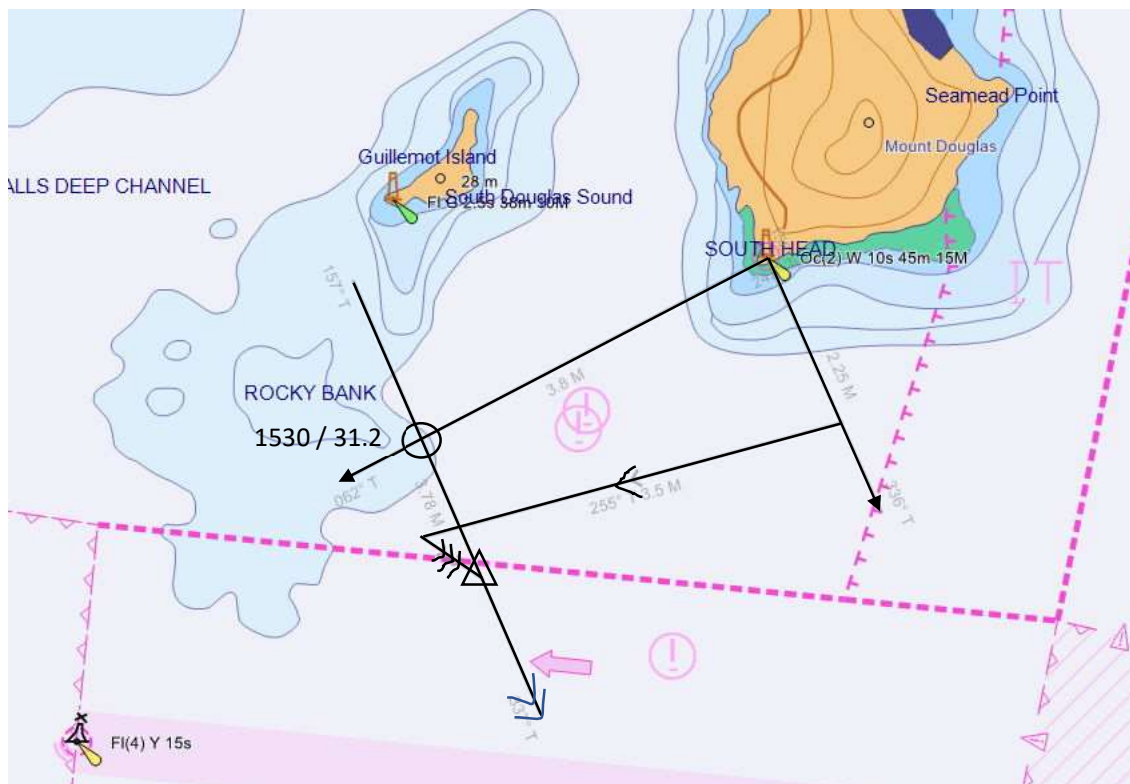
Find the yacht's position at 1530.

Solution:

Conversions:

Bearing	Cadburys	Dairy	Milk	Very	Tasty ¹
Course	265C	4W	261M	6W	255T
1 st Bearing			342M	6W	336T
2 nd Bearing			068M	6W	062T

The Plot:



1530 Position - 46° 05.2'N / 005° 53.6'W

¹ I use this mnemonic to remember the order for this.