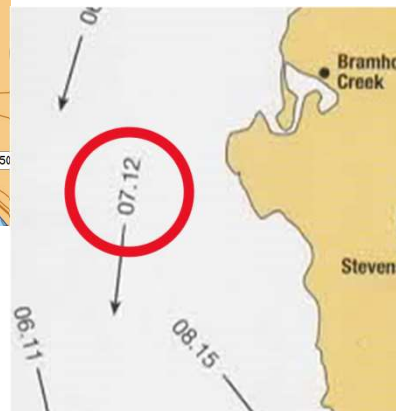
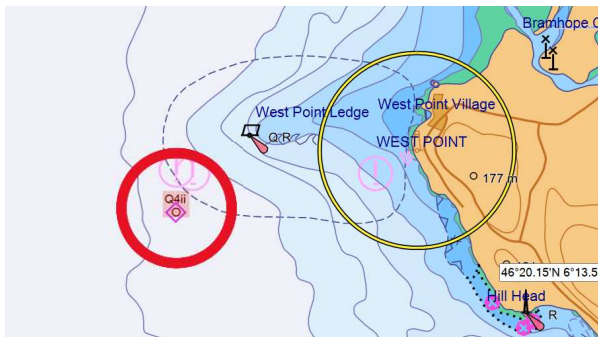


Tidal Streams Ex

Q4ii



1

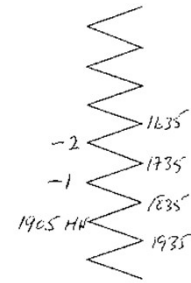
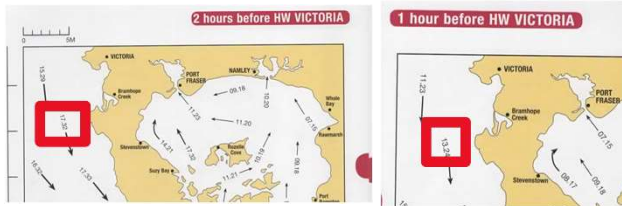


2

Friday 8 March - Victoria

HW 1905 UT 4.4m LW 1225 UT 2.0 m Range 2.4m

1715 – 1735 UT 20 mins of HW -2
 1735 – 1755 UT 20 mins of HW -1



3

Tidal Streams Proforma

Q 4 ii 8 MAR.

Tidal Diamond	Tidal Hour	Set (°T)	Spring Rate (knots)	Neap Rate (knots)	Range of Tide (m)	Interpolated or Extrapolated Rate (S) in knots	Duration in minutes (T)	Drift to use = $S \times (T/60)$ in nautical miles
TSA	HW-2	165	3.2	1.7	2.4	1.7	20	0.57M
TSA	HW-1	175	2.4	1.3	2.4	1.3	20	0.43M



4

